



FIRST LUTHERAN

# GOOD NEWS!

MAY 2024

All of this and more on the web at [www.FirstLutheranOnAlaska.org](http://www.FirstLutheranOnAlaska.org)

SEE ALSO...

[facebook.com/1stlu](https://facebook.com/1stlu)

[instagram.com/1stlu](https://instagram.com/1stlu)

[1stlu.org/@1stlu](https://tiktok.com/@1stlu)

[x.com/1stlu](https://x.com/1stlu)

[youtube.com/1stlu](https://youtube.com/1stlu)

[1stlu.org/cal](https://1stlu.org/cal)

## INSIDE

- 3 Readings for May  
Juneteenth
- 4 54321  
Mandala Painting  
Summer Art Series
- 5 Faith Webs
- 6 Serve & Give  
Synod Assembly  
Blood Drive
- 7 Announcements
- 8 Preschool  
Parents' Night Out  
Flight Crew
- 9 Sunday School  
Confirmation
- 10 Vacation Bible School  
Youth Gathering  
Blessing Graduates  
Peer Ministry Commissioning
- 11 OWLs Post
- 12 Sugar Creek  
Volunteer Appreciation Picnic
- 13 Calendar, Weekly Events
- 14 Foundation Update
- 15 Staff Directory

## MESSAGE FROM PASTOR STANTON



AS THE 2023/2024 program year comes to an end this month, I see plenty of reasons to celebrate. Our weekly worship attendance continues to creep up as we slowly build our in-person worship numbers from the post-shutdown lows that we and every other church experienced. The OWLs, our Foundation, the Teen Clothes Closet and even our governing sub-committees like Personnel, Finance and Stewardship are thriving. Perhaps the greatest cause for excitement this year was the "Faith Webs" experiment that saw over 100 supporting families sign up to connect with 59 kids as they go to camp, go on a mission trip to Rapid City or go to the Youth Gathering in New Orleans. Each family promised to give \$300 to their assigned kid, but

it's the connections between families that have blown me away. This is the broadest example of intergenerational community building that First has ever done since I have been here. People who otherwise have never even introduced themselves are sharing birthday celebrations, inviting each other to games/recitals and sitting with each other at worship or for a meal. It is EXACTLY the kind of thing a church should do. Well done First Lutheran!

It's not all hunky-dory, though. I also see dwindling numbers of young families attending worship, Sunday School and even Confirmation. Why? What does it mean? What should we do in response? It makes me want to re-double our efforts to return to our best practices; some of which we have

*Continues on page 2*

## MESSAGE FROM PASTOR KARYN



THIS LAST WEEK, the opportunity presented itself to reflect on the history of music I learned about while on sabbatical. You see, as much as my time in the South was focused on Civil Rights and the African American experience, you can't learn about those things without learning about the art that was created out of these experiences and the deep impact that art had on our country and the world. As I was reflecting about my time in the Mississippi Delta and all that I learned about blues, Delta Blues in particular, I was reminded of how important art is to the human experience. In an article I was recently reading, it pointed out that jazz music is an invitation to awe and that music (and art in general) helps us move out of our heads and back into our hearts and bodies. In the busyness of Lent

and Easter, I had forgotten to seek out wonder and awe. I was living too much in my head, organizing schedules and planning worship services and coordinating volunteers and trying to fit in walks and sleep to keep me healthy and worrying about a variety of things and, and, and...

Have you ever found yourself there? Too much in your head and not enough in your body, present in the moment, taking in all that God has provide with awe and wonder? My favorite technique to combat the swirling and twirling that goes on in my head is to breathe deeply. This should surprise no one at this point. If I am not asking you to "say more", then I am encouraging you to breathe deeply. Recently I was reminded of the 54321 practice that those who live with anxiety or experience panic attacks will use to get

*Continues on page 4*

inadvertently drifted away from. It has never been more important to connect with people (of all ages) face to face, or at least voice to voice over a phone. Personal, specific, invitations and thank yous are crucial. We also need to have more fun. 2024/25, look out!

In the midst of all the reflection that happens at the end of a program year, I am most thankful for the time, wisdom and service offered by Bridget Crave as she carved a path at First Lutheran to provide leadership to our Community Impact ministries. Ten years ago, we completed a Strategic Plan that named—as a high priority—the desire to create a position that would help our church look outside our own walls more often and more creatively. Bridget has helped lead our Teen Clothes Closet during her time on staff and was instrumental in moving it to its current location at Trinity Lutheran

where it serves hundreds of families a year. She has made sure First is among the leading congregations at the Hunger Walk in La Crosse, Monday Meals at Trinity and Juneteenth celebrations. She contributed toward our 'Waking Up White' reading and put together/ kept together countless Lent & Advent small groups throughout the years. She led our synod's commitment to staff the Warming Shelter downtown and did so much more than all this.

During worship on the last Sunday in April, we gave thanks for Bridget's ministry upon her retirement. Amidst all that she and her husband, Glen have navigated these past couple of years—and especially months—we all hope healing and wholeness come to stay for a good long time in their lives. They deeply deserve it. Bridget and Glen represent the absolute BEST of who First Lutheran is and what our family of

faith is about. Please make every effort to thank Bridget for her time on staff whenever you see her.

Now, to be clear, Bridget & Glen have no plans to leave First Lutheran, and as a mentor of mine says, "there is no retirement plan for believers." But... for Bridget: no more staff meetings, anyway.;

For now, we will not be seeking a successor to Bridget in the position of "Community Impact Director." Her leadership will be borne primarily by Pastor Karyn, along with a team of members willing to lead "one thing, one time", or more than one time if they choose. This has been the way of our ministry challenges in recent years as our giving has been unable to retain the number of staff we once had. More member leadership is needed as we meet the custodial needs of our building, so we have grown our "Sunshine" team that helps out once a month with small projects. More member leadership is needed as we meet the youth ministry needs of our kids, so we began a "Flight Crew" booster club type ministry meant to organize efforts that pass on the faith of Jesus to another generation. Now, we hope to gather a group of members who care about the impact FLC makes in our community.

It's an exciting time to be a part of First Lutheran when there are all kinds of opportunities to experiment, lead and love in whatever ways God has equipped you. Pastor Karyn and I would LOVE to talk through whatever ideas you may have and then unleash you into the work the Holy Spirit wants you to do.

*In Christ,*

Pastor Jason Stanton  
jason@firstlu.org



*Bridget Crave, serving at Monday Meals at Trinity Lutheran*

*Photo by Trish Harman*

First Lutheran Church  
410 Main St.  
Onalaska, Wisconsin 54650  
608.783.2236  
Fax: 608.783.3741

office@firstlu.org  
www.FirstLutheranOnalaska.org

## WORSHIP SCHEDULE

In-person, indoors & outdoors, and live streamed at [1stlu.org/live](http://1stlu.org/live)  
Sunday 8:00 & 10:30AM  
Wednesday 6:15 PM

## SUBMITTING NEW ANNOUNCEMENTS

To have your announcement in the newsletter, send it to [newsletter@firstlu.org](mailto:newsletter@firstlu.org), or give it to Andy in the office. **Deadline for the newsletter is noon on the 15th of the preceding month.**

To have your announcement in the weekly announcements pages handed out each weekend, send it to [announcements@firstlu.org](mailto:announcements@firstlu.org), or give it to Andy in the office. **Deadline for the weekly announcements is noon each Wednesday.**

First Lutheran is a congregation of the Evangelical Lutheran Church of America (ELCA)



## READINGS FOR MAY

Wednesday, May 1: Acts 18:1-4; 1 Corinthians 1:10-18

Sunday, May 5: John 15:9-17

Wednesday, May 8: 1 Corinthians 13:1-13

Sunday, May 12: John 17:6-19

Wednesday, May 15: 1 Corinthians 15:1-26, 51-57

Sunday, May 19: John 15:26-27; 16:4b-15

Wednesday, May 22: Acts 2:1-4; 1 Corinthians 12:1-13

Sunday, May 26: John 3:1-17

Above are the tentative readings scheduled for May. Readings used during worship are determined by the pastors on a weekly basis, and, therefore, are subject to change.

You can also view this list online and subscribe to receive them as an email at [1stlu.org/readings](http://1stlu.org/readings).



**JAZZ**  
WORSHIP

**NEXT:**  
WEDNESDAY, MAY 8  
6:15PM



**SAVE THE DATE!!**

**LA CROSSE  
JUNETEENTH  
CELEBRATION**

Community,  
Connection,  
History, Music,  
Food,  
& Fun

**Saturday, June 22nd 2024**

**Riverside Park**

**12:00pm- 7:00pm**



For more information  
email [Laxjuneteenth@gmail.com](mailto:Laxjuneteenth@gmail.com)  
or call 608-881-6418



**ON SUNDAY, MAY 19**

**One Worship at 9am**  
**followed by a celebration**  
**of Sunday School & Confirmation**

**Save the date and join us!**



**Art is a beautiful way to relax, to have fun and to experience God in a new way.**

Americans had and needed as they endured slavery and all that followed?

I'm so deeply grateful for all the artists I have learned about. I am thankful for their perseverance and their witness to how we can all be more fully human, living lives of joy and hope, wonder and awe, even in times that are dark. How our strength comes from not only within us but also by those we are in relationship, in community, with.

As we seek to build community here at First, we will also engage in a variety of events centered around art, this summer. We will continue our Summer Art Series on the 1st and 3rd Sundays of each month, doing simple and fun art projects together between worship services. In addition, we will have one larger, more involved art project event each month. In June, we will be painting Celtic mandalas, in July we hope to be learning about spoon carving and in August we hope to be at All Glazed Up in downtown La Crosse for an art class. The July and August events are still being arranged, so stay tuned for more information in the coming weeks.

Art is a beautiful way to relax, to have fun and to experience God in a new way. I hope that you make time this summer to learn about a new form of creative expression or to learn about the history behind your favorite kind of music or art form, I am sure you will be surprised when you do and that wonder will find its way into your soul.

Pastor Karyn Bodenschatz  
karyn@firstlu.org

them back into their bodies and what is real, rather than what is spinning in their heads. If you want to learn more and participate in an experiment and art project with me and others at First, listen to my sermon from April 14 or 17.

Sometimes though, breathing is not enough. Its a good quick fix, but something is needed more long term that gives my brain and heart some space. That is where art comes in, which could be painting or baking or gardening or sewing or anything else that get me into a more creative space. Research has shown that something happens in our brains when we are creative, something crucial, that allows our brain to begin to ponder the bigger questions or problems in helpful ways. It is like the brain gets distracted by the relaxed nature of being creative long enough to stop going so fast that it can actually think. Is it any wonder why then, art was such a key ingredient to the hope and strength African

## 5.4.3.2.1 Incarnation Witnesses

"You are witnesses of these things," Jesus says to the disciples. To be witnesses we need to be present in the moment, seeing, touching, hearing, smelling and tasting what is around us. As we make our way toward Pentecost, you are invited to practice the 54321 exercise and then take a picture or two of something you have seen, touched, heard, smelled or tasted of the color for that week.

### The 54321 exercise:

- Take a few long, deep breaths to ground yourself.
- Name 5 things you see around you.
- Name 4 things you can touch.
- Name 3 things you can hear.
- Name 2 things you can smell.
- Name 1 thing you can taste.

Afterwards take a picture or two as indicated below.

- **Week of May 5:** Take a picture of something orange.
- **Week of May 12:** Take a picture of something red.

Send pictures to [karyn@firstlu.org](mailto:karyn@firstlu.org).

## Mandala Painting

**June 13, 6:30-8:30pm**

Join Pastor Karyn for an evening of creativity, relaxation and fellowship as we paint wooden Celtic mandalas. We will use two painting techniques to paint our wooden mandalas, each person receiving four Celtic mandalas to work with. Bring an appetizer or snack to share. *Sign up at [1stlu.org/next](https://1stlu.org/next).*  
COST: \$25.



ALSO! Join us for another **summer art series!** Back again on the **1st and 3rd Sundays of June, July and August!**

We will gather between worship services to create a simple and relaxing art project together. One more way we build community, together!

# Faith webs

## Ideas for May...

Pray for one another.

Sit together in worship... on May 19 come for Pentecost service at 9am with lunch/games afterward. Wear RED!

Meet for lunch or dinner together.

Volunteer together: Sort clothes at the Teen Clothes Closet, volunteer together at the Synod Assembly. (At First Lutheran this year!)

Attend a spring concert or sporting event for the child you are supporting!

## Caring Conversation Questions

Do you enjoy watching the olympics?  
If so, what is your favorite sport to watch?

Do you grow a garden?  
If so what is your favorite thing to grow?

Do you have any summer vacation plans?

Do you have a favorite baseball team you follow in the summer?

## Deadline!

Thank you for being a part of a Faith Web! We pray these relationships in your church family continue to grow! A reminder that all donations toward the \$300 commitment made at the beginning of the school year are due by June 1, 2024.

## BIBLE READERS RE-UNITE!

Join Pastor Stanton for an online study of the Psalms! Life consists of 1) seasons of well-being, 2) seasons of hurt and 3) moments of surprise when we are overwhelmed with the new gifts of God. The Psalms—more than any other part of the Bible—are able to accompany us through all the seasons and moments! Each weekday Pastor Stanton posts a 5-10 minute deep dive into the Psalms.

Find it at:

[FirstLutheranOnalaska.org](http://FirstLutheranOnalaska.org)  
[facebook.com/1stlu](https://facebook.com/1stlu)  
[youtube.com/1stlu](https://youtube.com/1stlu)



**Volunteer for the Synod Assembly**  
**June 7 & 8, held HERE at First!**  
*Contact Synod Office 608.788.5000 or*  
*office@lacrosseareasynod.org*

**VOLUNTEER FOR THE LA CROSSE AREA SYNOD ASSEMBLY**

If you want to experience Synod Assembly without the pressure of being a Voting Member, are too young to be a voting member, or cannot be present the whole weekend we would be happy to have you be part of the event as a volunteer.



**What our Volunteers do:**

- Greet people
- Hand out materials
- Answer questions or point to those who know the answer
- Collect offerings
- Assist with childcare
- And bring enthusiasm!

Volunteers are welcome to listen in on any session when they don't have tasks to do, they just cannot vote.

If interested fill out this form:  
[tinyurl.com/LAXSynodVolunteer](http://tinyurl.com/LAXSynodVolunteer)



**SERVE & GIVE**

**GO AND DO LIKEWISE** LUKE 10:37

**SUNSHINE TEAM**

The Sunshine Team meets at First Lutheran on the **first Thursday of the month at 9:30am** to help with various jobs. Help make First Lutheran look nice! Refreshments are supplied to replenish your reserves! Dues are free! *Questions? Contact Dan at dan@firstlu.org.*

**NEWSLETTER ASSEMBLY**

It's a relaxing way to volunteer! **Tuesday, May 28, at 10am**, to assemble the June/July duo-newsletter. See you there!

**MONDAY NIGHT COMMUNITY MEALS**

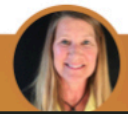
For many years, Trinity Lutheran Church on the northside of La Crosse has hosted a meal on Monday nights. First Lutheran has agreed to help with this important community ministry, by preparing a meal, serving the food and cleaning up. We need people to plan and prepare the meal to feed 100-150 people, and folks to serve the meal (5-6pm) and help with cleanup. Meal prep can be done at your convenience. Many times people prepare the main course a week ahead, freeze it and reheat it. Food for the meal can be gotten at no charge from the Hunger Task Force in La Crosse. **NEXT DATE: Sept. 9** You can sign up at [1stlu.org/next](http://1stlu.org/next).

**First Lutheran Onalaska Blood Drive**

*Be a Beacon of Hope*

**July 2**

**TUES, 12:30–5:30pm**  
**Walk-ins welcome, appointments encouraged:**  
**schedule at [1stlu.org/blooddrive](http://1stlu.org/blooddrive)**  
**Remember to bring a mask & ID**



*Questions? Contact Diane Shuda: 608.386.4270*

**Make a wish for water to raise money for the La Crosse Area Synod Hunger Team safe water project!**

Safe and abundant water in a community means better health, better crops, better nutrition, and better quality of life. **Water is life...** water changes everything!



*Donate at the well or at [1stlu.org/next](http://1stlu.org/next)*



## WORSHIP CHANGES

- There will be only one service on **Sunday, May 19, at 9am**, followed by a celebration of our Sunday School and Confirmation year!
- **Wednesday worship will take a summer break Memorial Day through Labor Day**; last service is May 22 and resumes Sept. 4
- **Sunday, June 9:** Worship at 8am will be at First, and worship at 10am will be at Riverside Park with the synod (or back at First if there is inclement weather)
- **Starting June 16 thru the summer:** Sunday worship will be at 8am and 10am
- Three outdoor worship services this summer (weather permitting), followed by potluck: **June 23, July 21 and August 18, all at 10am**

## WEBSITE UNDER CONSTRUCTION

Starting in **early June**, the church's website will be under construction as we upgrade to the latest version offered by our web developer. If you have suggestions for the website, now is a good time to offer them. *Send suggestions to [andy@firstlu.org](mailto:andy@firstlu.org).*

## BAPTISMAL PREPARATION

The pastors are considering baptisms on an individual basis. The next baptism preparation session will be **Saturday, June 1, at 10am** for anyone who is considering or has scheduled a baptism. *To register or ask questions call the church office at 608.783.3326 by Sunday, May 26.*

## ANNUAL MEETING ELECTION RESULTS

Back in February, members who attended the annual congregational meeting (and tailgate party!) elected three people to the Vision & Leadership Team, and they will assume their duties on May 1.

Donna Bossman and Jason Witt were elected to their second three-year terms. Glen Vilim was newly elected to the board, taking Larry Schreiner's spot, who reached the two-term limit.

Chosen to represent First Lutheran at Sugar Creek Bible Camp's annual meeting in February were Tina Buchal and Becky Runde.

And elected to represent First Lutheran at the Synod Assembly in June were Sue Bodenschatz, Sharon Kjos, Peter Kirkegaard, Ann Nelson and Randy Nedrelo. The Synod Assembly will be at First Lutheran this year.

## HAPPY BIRTHDAY!!

If you have received a birthday postcard from First in the last several months and still have it, bring it into church Mon-Fri, 8am-4pm and pick up a small gift.

## WE CELEBRATE THE GIFT OF HOLY BAPTISM

- **Nicholas Ludden**
- **August Schmit**
- **Rhys Herbie Metzsig**
- **Connor Edward Strasser**
- **Elena Josephine Teresa Strasser**
- **Nathan Matthew Strasser**

## CHRISTIAN SYMPATHY TO THE FAMILY & FRIENDS OF:

- **Branden Brownrigg**
- **Delores Hammer**

## NEW MEMBERS

*I rejoiced with those who said to me, "Let us go to the house of the LORD."*

We extend a warm welcome to our new members of First Lutheran, who were formally received on Sun., MON. @@.

- **Rob & Sonya Mahlum, Marcus and Brett**
- **Kayla & Austin Leichtnam**
- **Diane Martinek**
- **Cory Onsrud & Shanna Rhude**
- **Nancy & Jim Whalen**
- **Karen & Mike Woods**

## GIFTS AND MEMORIALS

*Thank you for the following memorials:*

### In memory of Carol Hanson

- Undesignated: Nancy Beguin, Shaun & Beth Gibbs, DeLyle Hanson, Kris Huesmann, Judy Johnson, Gloria Kubiak, Nancy Thorson

### In memory of Virgil Stetzer

- Music Fund: Nancy Holthaus, Shirley Sacia, Bonnie Smith

### In memory of Neta Niedfelt

- Undesignated: LeRoy Niedfelt

### In memory of Delores Hammer

- Undesignated: Rochelle & Robert Hatleli

### In memory of Annette Sherry

- Undesignated: David & Kelly Aldag, Suzann & David Balduzzi, John & Therese Belanger, Nancy Berguin, Julienne Burton, Lon & Mary Erickson, Michael Froh & Susan White, Steve & Joann Harrison,

Leroy & Wanda Hougom, Judy Johnson, Kevin & Jody Kaiser, Martha Kemp, Gloria Kubiak, Michael & Pamela Langan, Tom & Lisa Liebl, David & Donna Lindert, Elizabeth MacEwen, Nancy Olds, Bob & Joni Roenitz, Mark & Shirley Sacia, Alice Schaff, Mary & Michael Sellinger, David & Sarah Sonnentag, Ellis & Judy Stetzer, Nancy Thorson, Judy & Merrill Wachter, David & Mona Walker, Katy Wood

- OWLs: Dave & Barb Skogen
- Lutheran World Relief: Gaylord & Esther Dolphin
- First Lutheran Foundation: Nancy Holthaus

### In memory of Barbara J. Wood

- Youth Fund: Bev Bockenbauer, Doug & Solveig Bockenbauer, Paul & Anna Hendrickson, Tom & Karen Johnson, Norm Jones, Gordon & Carol Knudson, Russell Lee Jr., Scott & Judy Lee, Avis Link, Scott & Kim Link, Joe & Marian Smith, Roger Wood

## HOSPITAL REMINDERS

**For Gundersen:** be sure to alert the hospital of your church affiliation when they ask, and they will release your name to us when we call.

**For Mayo/Franciscan Healthcare:** it is important that you or a family member contact us at the church office: 608.783.2236. Mayo no longer lets churches know who is a patient at their hospital.

# SPRING FAITHFUL READERS

## GROWING FAITHFUL READERS

*You're My Little Bookworm* Nicola Edwards

*How to Read a Book* Kwame Alexander

*Ban This Book* Alan Gratz

*The Enchanted Hour* Meghan Cox Gurdon



AVAILABLE AT THE RESOURCE CENTER

# Parents' Night Out

**NEXT: Friday, May 17**

Reg opens at 4:45pm, Dinner at 5:30pm,  
games & activities until 8pm

Ages: birth to 12 are welcome

**COST: Free will donation**

RSVP & VOLUNTEER at [1stlu.org/next](http://1stlu.org/next)

# NOW ENROLLING FOR September!

Do you have a 2, 3 or 4 year old that is ready for school?

Send them to First Lutheran Preschool in Onalaska.

Email Us for more information.

[preschool@firstlu.org](mailto:preschool@firstlu.org)



# f.f.y. Flight Crew

Adults shaping ministry and  
supporting youth at First!

**NEXT MEETING:**  
**Wed., May 8, 5:30pm**





# CONFIRMATION

Teen-relevant, age-appropriate, active, modern, and theologically sound  
Events subject to change; up-to-date info at [1stlu.org/confirmation](http://1stlu.org/confirmation)

## UPCOMING CONFIRMATION EVENTS

Sundays, 9:15am, thru May 19  
**Gr 6 & 7 Confirmation Classes - Fireside Rm**

Wednesdays, 5:30pm, thru May 8  
**Confirmation Dinner**

Wednesdays, 7pm, thru May 8  
**Gr 8-9 Small Groups**

Wednesday, May 15, 5:30pm  
**Confirmation Celebration**



# Sunday School

Last day of Sunday School:  
May 19

## FAITH BUILDING BLOCKS

Throughout the year each age group has a special "Faith Building Block" session in which parents or special adults are asked to attend class with their child. Most sessions last for four weeks. The first class consists of parents/guardians connecting with a pastor. Classes two and three are for the child and their parents/guardians to attend together, sharing in conversation and growing together in faith. The fourth and final week, the Faith Building Block is lifted up in worship in celebration of what the students and families have learned about.

### 4K: The Keys

**Sunday, May 5:** parents/guardians only

**Sunday, May 12:** parents/guardians with children

**Sunday, May 19:** Faith Building Block lifted up in worship

# CONFIRMATION

CAMP AT SUGAR CREEK

GOING INTO GRADE 8 IN THE FALL

Sun, June 16-Fri, June 21



Questions? Contact [jason@firstlu.org](mailto:jason@firstlu.org)

# START the PARTY

**VACATION BIBLE SCHOOL**  
Sunday, Aug. 4–Thursday Aug. 8



## BLESSING OUR GRADUATES

WEDNESDAY, MAY 1 AND  
SUNDAY, MAY 5  
AT ALL WORSHIP SERVICES

2024 ELCA Youth Gathering

**CREATED**

**TO BE** MYLE  
the table Young Adult Gathering

Pre-Gathering Meetings:  
Sundays, May 5 & June 2  
5:30pm

f.y.



Questions? Contact [jason@firstlu.org](mailto:jason@firstlu.org)

**peer**  
ministry leadership

Our Peer Ministers  
from 2024 will be  
blessed at the one  
9am service  
on Sunday, May 19

*Blessings to...*

- Adam Amundson
- Addyson Ferguson
- Kai Gallant
- Mia Gallant
- Elizabeth Matz
- Bennett Rieber
- Andrew Stanton



# OWLs

OLDER WISER LUTHERANS

The OWLs had a great month of April with an exciting game of "Name that Tune" at our potluck. People could hardly keep their seats when that 60's rock and roll started playing. For our outing, we went to see a fantastic performance of *Godspell* at Viterbo.

We will kick off May with our potluck on **Wednesday, May 15, at noon** in the Fellowship Hall. With May being the start of spring, let's bring our favorite picnic food to kick off the season. For our program we have invited a representative of Hope Restores to tell us about their organization and the people they serve. Hope Restores is the designated First Lutheran stewardship charity for 2024.

With the advent of spring, the OWLs will leave La Crosse for our May outing. We will

fire up the bus and travel to Rochester, Minnesota, to visit the Mayowood Mansion and have a delicious lunch at the 5 West Kitchen and Bar. This wonderful excursion will take place on **Saturday, May 25**. We will leave the church at 9:30am. The Mayowood Historic Home is one of the top attractions in Rochester, drawing thousands of visitors each year! A tour of Mayowood is to experience the personal lives of Dr. Charlie Mayo, co-founder of the Mayo Clinic, and his son, Dr. Chuck Mayo, and gives visitors an opportunity to celebrate their amazing achievements in medicine and human service. The 23,000-square-foot, 38-room home was built in 1910 by Dr. Charlie and Edith Mayo. The home is built of concrete construction, the first of its kind in southeast Minnesota. Once a 3,300 acre country estate, the home has seen many changes over the years. Indoors, original Mayo family artifacts tell the story of their world travels and how the home was used as a house of hospitality to entertain the community and VIP celebrity guests. Outdoors, this home is

surrounded by a grand terrace overlooking the Zumbro River along with beautiful botanical gardens and an oriental tea house. Cost of the tour is \$20 and lunch is on your own. To experience the beauty of the home and estate, please call or email volunteer Brian Narveson to reserve a spot: 630.816.5917 / [bcnarveson@gmail.com](mailto:bcnarveson@gmail.com).

We look forward to seeing everyone in May.

---

*The OWLs are a group at First that welcomes anyone, First Lutheran members or not, who are 55+. For information or to ask questions, contact Brian Narveson at [owls@firstlu.org](mailto:owls@firstlu.org). A reminder for all potlucks that First Lutheran is a nut-free campus. Please do not bring food containing nuts or nut butters/oils/extracts of any kind onto the church campus. This is for the safety of all of our members. Thanks!*



If you would like to start receiving the regular OWLs emails, contact Brian Narveson at [owls@firstlu.org](mailto:owls@firstlu.org) or scan this QR code. We are a social group for everyone 55+, and we know how to have fun.



**Explore all of the programs available at Sugar Creek in 2024!**

In preparation for enrollment opening on December 4th, explore our website for more information regarding details about next summer.



**More info: [sugarcreekbiblecamp.org](http://sugarcreekbiblecamp.org)**

# SCBC SPRING VOLUNTEER WORK WEEKEND

**FREE LODGING FRIDAY NIGHT**

.....

**SUGAR CREEK BIBLE CAMP**  
**SATURDAY, MAY 4, 2024**  
**9:00 AM - 7:00 PM**

.....

- Play a part in building, cleaning, arranging and preparing camp buildings, trails, and equipment for a safe and busy season ahead
- Projects for all skill levels
- Bring your church, friends, youth groups, and family
- Enjoy Sugar Creek hospitality and hearty meals





*RSVP: [office@sgrcreek.org](mailto:office@sgrcreek.org) or 608-734-3113*  
[www.SugarCreekBibleCamp.org](http://www.SugarCreekBibleCamp.org)



**VOLUNTEER Appreciation PICNIC**

**Sun., July 14**  
**11:15am–1pm**  
**Rowe Park Shelter #1**  
*RSVP at [1stlu.org/next](http://1stlu.org/next)*



**Questions? Contact [kathryn@firstlu.org](mailto:kathryn@firstlu.org)**

# MAY AT FIRST LUTHERAN *see also weekly events list on back*

Sunday	Monday	Tuesday	Wednesday	Thursday	Friday	Saturday
<p><b>APRIL</b></p> <p>1 2 3 4 5 6 7 8 9 10 11 12 13 14 15 16 17 18 19 20 21 22 23 24 25 26 27 28 29 30</p>	<p><b>JUNE</b></p> <p>1 2 3 4 5 6 7 8 9 10 11 12 13 14 15 16 17 18 19 20 21 22 23 24 25 26 27 28 29 30</p>	<p>30</p> <p>9a Quilters - FS 1:30p Staff Meeting 3:30p Knitters &amp; Crocheters - NX</p>	<p>1</p> <p>Recognize Graduates in Worship 10a Springbrook Worship 12p Free Popcorn for Community</p>	<p>2</p> <p>9:30a Sunshine Team 7p Women of the House - UR/NX</p>	<p>3</p> <p>7p AA - FH</p>	<p>4</p> <p>Volunteer Work Weekend @ Sugar Cre...</p>
<p>5</p> <p>Kindergarten FBB: Lord's Prayer, lifted... Recognize Graduates in Worship 9:15a 4K FBB: The Keys (1st meeting, parents/guardians only) - FH 5:30p Pre-Gathering Gathering - English Lutheran</p>	<p>6</p> <p>7p AA - FS 7p Bible Matters - NX</p>	<p>7</p> <p>9a Quilters - FS 1:30p Staff Meeting 3:30p Knitters &amp; Crocheters - NX</p>	<p>8</p> <p>10a Ona Terrace Worship 12p Finance Team Mtg 5:30p FLY Flight Crew 6:15p Jazz Worship</p>	<p>9</p> <p>11a Nosh with Neighbors @ City Hall 7p Women of the House - UR/NX</p>	<p>10</p> <p>7p AA - FS</p>	<p>11</p>
<p>12</p> <p>9:15a 4K FBB: The Keys (2nd meeting, parents/guardians &amp; child) - FH</p>	<p>13</p> <p>7p AA - FS 7p Bible Matters - NX</p>	<p>14</p> <p>9a Quilters - FS 9a Dorcas Circle - UR 1:30p Staff Meeting 3:30p Knitters &amp; Crocheters - NX</p>	<p>15</p> <p>Confirmation Small Grps, Last Day Deadline for Jun/Jul Mini-Newsletter 10a Ona Terrace Worship 12p OWLs Potluck - NX 5:30p Confirmation Celebration - FH</p>	<p>16</p> <p>10a Grief Support Group - UR 7p Women of the House - UR/NX</p>	<p>17</p> <p>4K Graduation 4:45p Parent's Night Out - FH 7p AA - FS</p>	<p>18</p>
<p>19</p> <p>4K FBB: The Keys, lifted up in worship Peer Ministry Commissioning Pentecost... WEAR RED! Sunday School &amp; Confirmation Celebr... 9a One Worship</p>	<p>20</p> <p>1p Elizabeth Circle 7p AA - FS 7p Bible Matters - NX</p>	<p>21</p> <p>9a Quilters - FS 1:30p Staff Meeting 3:30p Knitters &amp; Crocheters - NX 5:15p Personnel Team Meeting 6p Stephen Ministry 7p Vision &amp; Leadership Team Mtg</p>	<p>22</p>	<p>23</p> <p>7p Women of the House - UR/NX</p>	<p>24</p> <p>7p AA - FS</p>	<p>25</p> <p>OWLs Fly to Maywood</p>
<p>26</p>	<p>27</p> <p>Memorial Day (office closed) 7p AA - FS</p>	<p>28</p> <p>9a Quilters - FS 10a Assemble Duo-Newsletter - NX 1:30p Staff Meeting 3:30p Knitters &amp; Crocheters - NX</p>	<p>29</p>	<p>30</p> <p>7p Women of the House - UR/NX</p>	<p>31</p> <p>Youth Fundraising Deadline 7p AA - FS</p>	<p>1</p> <p>Foundation Grant Deadline 10a Baptismal Preparation - NX</p>

## weekly events for

# MAY

at First Lutheran

### SUNDAYS

- 8:00am Worship
- 9:15am Gr 6 & 7 Confirmation Classes - Fireside Rm
- 9:15am Parent Share - Upper Rm
- 9:15am Sunday School
- 10:30am Worship

### MONDAYS

- 7:00pm Bible Matters - Narthex

### TUESDAYS

- 9:00am Quilters - Fireside Rm
- 10:30am Staff Meeting
- 3:30pm Knitters & Crocheters - Narthex

### WEDNESDAYS

- 6:00am Courageous Men - Fireside Rm
- 6:30am Coffee w/ Pastor Karyn - Narthex
- 5:30pm Confirmation Dinner
- 6:15pm Worship
- 7:00pm Confirmation Small Groups

### THURSDAYS

- 7:00pm Women of the House

### FRIDAYS

- 7:00pm AA - Fireside Rm (*Fellowship Hall 1<sup>st</sup> Friday*)

# First Lutheran FOUNDATION



THE MABEL ANDERSON Scholarship was established from a generous bequest received from the Estate of Mabel Anderson in 1989 in memory of her parents, Peder and Johanna Anderson. It was Mabel's wish that this monetary gift would enable further growth of our church, its ministries and stewardship within the community.

This year, the committee is awarding 11 scholarships to area high school seniors, who are moving on to post-secondary learning this fall. This year's recipients are: Brennan Garbers, Zachary Dahlke, Kyla Betz, Samantha Renkas, Taylor Hanson, Claire Johnson, Cole Everson, Jada Odegard, Samuel Bossman, Juliene McDonald and McKennah Ferguson.

These young people were recognized during services on April 21. Please keep them in your prayers.

Each year the Foundation Committee awards 5% of its holdings to worthy recipients in four categories. These are ELCA ministries, community organizations, capital improvements and the Mabel Anderson Scholarships.

If you have questions about the foundation or how you can contribute, please contact the First Lutheran Church office by emailing [office@firstlu.org](mailto:office@firstlu.org) or calling 608-783-2236. The Stewardship and Foundation Committees will be happy to help you.

## CALENDAR KEY

- CR = Choir Room
- FBB = Faith Building Block
- FH = Fellowship Hall
- FS = Fireside Room
- LG = Lounge
- MR = Mary Room
- NX = Narthex
- SN = Sanctuary
- TR = Thomas Room
- UR = Upper Room

*Events subject to change; up-to-date information at [1stlu.org/cal](http://1stlu.org/cal)*

*Subscribe to our Google calendar at [1stlu.org/calsub](http://1stlu.org/calsub)*

*Use the QR Codes to quickly add these events to the calendar of your smart phone or tablet.*

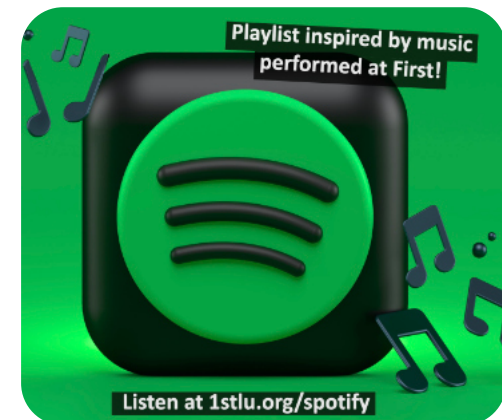
*Tips: focus the code, hold the device still, try various distances, & use good lighting. Need a scanning app? Try [www.scan.me](http://www.scan.me).*



## GRANT DEADLINE

**REMINDER:** Grant applications from worthy organizations wishing to request funds from the Foundation Fund are **due by June 1!**

*More info about the Foundation Fund and the grant application, can be found at [1stlu.org/foundation](http://1stlu.org/foundation)*



# STAFF DIRECTORY

Jason Stanton ..... Senior Pastor ..... 608.386.6431 ..... jason@firstlu.org  
Karyn Bodenschatz ..... Associate Pastor ..... 608.433.6002 ..... karyn@firstlu.org

Kathryn Pedretti ..... Director of Hospitality ..... kathryn@firstlu.org

## SUPPORT STAFF

Tamara Schonsberg ..... Office Assistant ..... 608.783.2236 ..... office@firstlu.org  
Andy Stutesman ..... Director of Communications & Marketing ..... andy@firstlu.org  
Dan Hurley ..... Director of Buildings & Grounds ..... dan@firstlu.org  
Diane Finnegan ..... Bookkeeper ..... diane@firstlu.org  
Jerry Yushta ..... Assistant Custodian  
Rob Nelson ..... Assistant Custodian

## MUSIC STAFF

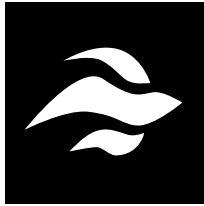
Gabriel Hicks ..... Organist ..... gabe@firstlu.org  
Jim Knutson ..... Bell Choir Director ..... jim@firstlu.org  
Todd Saner ..... Senior Choir Director & Contemporary Music Coordinator ..... todd@firstlu.org

## PRESCHOOL STAFF

Melissa Rolbiecki ..... Preschool Director ..... 608.779.4504 ..... preschool@firstlu.org  
Amy Zimmer ..... 4K Teacher ..... amy@firstlu.org  
Marci Leppert ..... Preschool Assistant Teacher  
Angie Strittmater ..... Preschool Assistant Teacher

## VISION & LEADERSHIP TEAM

Michelle Renkas ..... Vice President  
Donna Bossman ..... Secretary  
Amanda Zieba  
Glen Vilim  
Jason Witt  
Meredith Hougen  
Phyllis Bey



**FIRST  
LUTHERAN**

410 Main Street  
Onalaska, WI 54650  
608.783.2236  
[www.FirstLutheranOnalaska.org](http://www.FirstLutheranOnalaska.org)

**WORSHIP SCHEDULE**

Live streaming at [1stlu.org/live](http://1stlu.org/live)  
Sundays 8am & 10:30am  
Wednesday 6:15pm

**ADDRESS SERVICE REQUESTED**

To stop delivery: email [andy@firstlu.org](mailto:andy@firstlu.org) or call office at 608.783.2236

NON PROFIT ORG  
POSTAGE PAID  
ONALASKA, WI  
PERMIT #15



Scan to download  
this newsletter to  
your smart phone  
or tablet



Go green!  
Scan to subscribe  
to the newsletter  
online



Evangelical  
Lutheran Church  
in America

edition: May 2024



# GOOD NEWS

MAY 2024

INSIDE  
**MANDALA  
PAINTING  
SUMMER INSERT  
FAITH WEBS  
DEADLINE**

